

# BIL-JAX

A STEP ABOVE®



**SUMMIT**SERIES  
TRAILER-MOUNTED BOOMS™

## THE BRAND YOU KNOW, the experience you trust.

*Bil-Jax has over 20 years of experience in the trailer-mounted boom marketplace and has been a leading manufacturer of high quality equipment to the construction and rental industry for nearly 60 years.*

## SUPERIOR by design.

*The Summit Series offers exclusive patent-pending technologies and sets new industry standards for performance, features and specifications providing unprecedented value and exceptional return on investment.*

## LEADING SELECTION of models and options.

*From both telescopic and articulating models with the broadest selection of options and accessories available, to personal service and superior product support, you can depend on Bil-Jax for your aerial access needs.*

## THE RIGHT choice...

*Compare the Summit Series against similar machines and the choice is clear.*

### Best in class

- Platform height
- Outreach
- Combination platform jib and extension boom\*
- Turntable rotation
- Platform size
- Leveling system
- Tow speed rating
- Control system
- Compact stowed dimensions and outrigger footprints

\* Featured on all articulating models.



# TELESCOPIC model

# 3632T

*The leading towable stick boom with an incredible 500 lbs of unrestricted outreach to 32 feet.*

## key SPECIFICATIONS

- 43½ ft (13.4 m) working height
- 32 ft (9.8 m) outreach
- 500 lb (227 kg) lift capacity
- 21 ft 11 in (6.7 m) transport length
- 65 mph (105 km/h) tow speed rating
- 360-degree continuous turntable rotation

## key FEATURES

- Automatic leveling in less than 30 seconds
- Best-in-class 12-degree leveling capability
- Simple telescopic boom design
- Zero tail swing
- Intuitive control system
- Multiple function speeds
- Simultaneous multi-function control system
- 12½-in (32 cm) diameter non-marking footpads
- Hydraulic surge and parking brakes
- Integrated forklift pockets



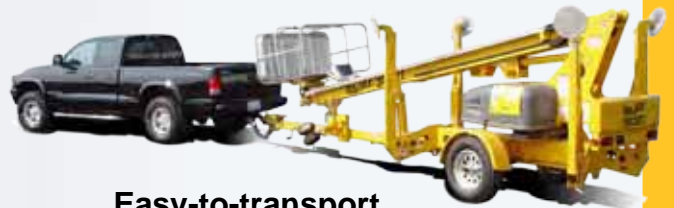
### Easy-to-use

Both the platform and ground controls have an easy-to-understand display panel with logically positioned control buttons around a single machine image for easy identification of button functions.



### Superior performance

All models feature an auto-leveling system and optimized outrigger geometry providing quick and easy machine set-up and industry leading leveling capability.



### Easy-to-transport

Summit Series booms are easily towed by vehicles with an adequate towing capacity and that are equipped with an appropriately rated hitch.



# ARTICULATING models

## 3522A

*Superior features and best-in-class performance  
unmatched in the worldwide marketplace.*

### key SPECIFICATIONS

- 43 ft (13.3 m) working height
- 22½ ft (6.9 m) outreach
- 19 ft (5.8 m) up and over height
- 500 lb (227 kg) lift capacity
- 16 ft 3 in (4.9 m) transport length
- 65 mph (105 km/h) tow speed rating
- 700-degree turntable rotation

### key FEATURES

- Automatic leveling in less than 30 seconds
- Best-in-class 12½-degree leveling capability
- Telescopic upper boom and platform jib
- Negative angle upper boom
- Intuitive control system
- Multiple function speeds
- Simultaneous multi-function control system
- 10-in (25.4 cm) diameter non-marking footpads
- Hydraulic surge and parking brakes
- Integrated forklift pockets



# 4527A

**Best value in the industry with specifications and features comparable to more expensive 50 ft models.**

## key SPECIFICATIONS

- 51 ft (15.7 m) working height
- 27 ft (8.2 m) outreach
- 20 ft 9 in (6.3 m) up and over height
- 500 lb (227 kg) lift capacity
- 19½ ft (5.9 m) transport length
- 65 mph (105 km/h) tow speed rating
- 700-degree turntable rotation



## Exceptional working envelope

All articulating models feature an upper telescopic extension boom that can be positioned at a negative angle and a platform jib providing exceptional reach, working envelope, and platform positioning capability.

## key FEATURES

- Automatic leveling in less than 30 seconds
- Best-in-class 13½-degree leveling capability
- Telescopic upper boom and platform jib
- Negative angle upper boom
- Intuitive control system
- Multiple function speeds
- Simultaneous multi-function control system
- 12½-in (32 cm) diameter non-marking footpads
- Hydraulic surge and parking brakes
- Integrated forklift pockets

## Standard jib

Articulating Summit Series models include a 4 ft (1.3 m) platform jib, with a 150-degree range of motion, as standard equipment.



# ARTICULATING models

## 5533A

### key SPECIFICATIONS

- 61 ft (18.8 m) working height
- 33½ ft (10.2 m) outreach
- 23 ft 1 in (7 m) up and over height
- 500 lb (227 kg) lift capacity
- 22 ft 11 in (7 m) transport length
- 65 mph (105 km/h) tow speed rating
- 700-degree turntable rotation

### key FEATURES

- Automatic leveling in less than 30 seconds
- Best-in-class 12½-degree leveling capability
- Telescopic upper boom and platform jib
- Negative angle upper boom
- Intuitive control system
- Multiple function speeds
- Simultaneous multi-function control system
- 12½-in (32 cm) diameter non-marking footpads
- Hydraulic surge and parking brakes
- Integrated forklift pockets



*Above and beyond your expectations.  
This is the big lift that gets the job done.*



REACH MORE TO DO MORE

# OPTIONS & accessories



## Drive and Set<sup>1</sup>

Ideal for parking lot lighting maintenance and other applications that require multiple set-ups, this option allows an operator to drive, deploy and retract outriggers and automatically level the machine from the platform when it is in the fully lowered position. The proportional friction drive system can climb grades of up to 20% and also features an auto-release braking system.



## DC / Gas Hybrid

This option includes a 4,500-watt (4.9kVA) continuous duty AC generator powered by a 9HP Honda gas engine featuring:

- Electric start and remote choke.
- Robust steel cover with gas shock and rubber latch.
- Generator supplies 110/60 AC power to the 40-amp charger and upper and lower GFI outlets providing remote power at both the platform and turntable.
- A power sensing system automatically switches between generator and extension cord power.



## Spare Tire and Mounting Bracket

Provides convenient, on-board storage of a spare tire.



## Accessory Mounting Tray (Telescopic only)<sup>2</sup>

In addition to the generator interface plate the 3632T can be equipped with up to two additional accessory mounting trays to accommodate generators, air compressors and pressure washers.

## Additional Battery Pack (Telescopic only)<sup>3</sup>

Doubles the available battery power and lift cycles by adding an additional bank of batteries. Strongly recommended for DC models equipped with the drive and set option.

## Combination Hitch<sup>4</sup>

A large variety of hitch couplers are available for the Summit Series product line including a height adjustable combination hitch option that can be configured with any of the following couplers:

- 2 inch ball
- 2 5/16-inch ball
- 2 1/2-inch I.D. pintle ring
- Clevis



## Tool Tray

Provides a convenient location to keep tools, fasteners and other items within easy reach.



## Tube Caddy

Holds fluorescent tubes securely in the platform and provides easy access.

## Manual Platform Rotate

A manual rotate mechanism allows the operator to rotate the platform 90-degrees in either direction.

## Electric Brakes

Optional electric brakes are available with fixed or combination hitch couplers.

<sup>1</sup> Designed and intended for use on flat, firm surfaces only. Not for use in rough terrain or on steep inclines.

<sup>2</sup> The right hand accessory mounting plate option is not available on Gas/DC Hybrid powered models.

<sup>3</sup> Additional charging time is required to fully charge the system.

<sup>4</sup> All Summit Series Booms come standard with a fixed height, heavy-duty 6,000 lb rated 2-inch ball hitch (except the 5533A, which comes standard with the adjustable height combination hitch and 2-inch lever-lock coupler).



### Material Lifting System

A material lifting hook and quick disconnect platform allows any Summit Series Boom to be converted into a lightweight crane in seconds. This option features a load management system that measures the weight at the end of the boom and displays this information at the ground control station.



### Air Line to Platform

Featuring a 3/8-inch diameter, 300 psi rated nylon braided air hose and includes both a 1/4-inch and a 3/8-inch universal<sup>5</sup> female coupler that can be attached to the hose end at the platform bulkhead, ensuring that you'll always be able to connect your tools to air power when you're on the job site.

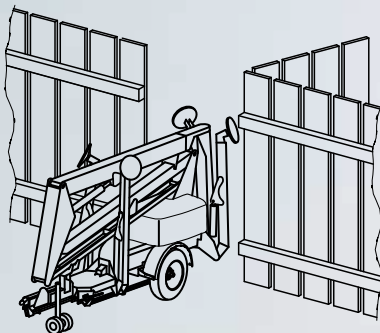


### Water Line to Platform

Features a 3/8-inch diameter, steel braided, pressure washer grade hose rated at 3,000 psi.

### Horizontal Jib Rotator (Articulating only)

A hydraulically actuated rotator provides 180-degree horizontal movement of the jib providing improved access to hard-to-reach areas or in areas where machine set-up is difficult. The platform rotator can also be integrated to allow an operator to "wrap-around" buildings or other structures.



### Retractable Axle (3522A only) PATENT PENDING<sup>6</sup>

Providing industry leading access, this option allows the width of the 3522A to be narrowed to only 34-inches, providing the ability to move the unit through single doorways or outdoor fence gates. Axle extend and retract functions are hydraulically actuated in less than 30 seconds when the machine's tires are raised off the ground by the outriggers.

<sup>5</sup> The 1/4-inch universal coupler accepts up to six different styles of 1/4-inch male hose fitting connectors and the 3/8-inch coupler accepts up to four different styles of 3/8-inch male hose fitting connectors.

<sup>6</sup> The optional retractable axle system features a patent-pending dual mechanical interlock system that deters retracting the axles while the trailer is hitched to a towing vehicle and physically blocks the opening of the trailer hitch to discourage operators from hitching their vehicle to the trailer while the axles are in the retracted position. The system also includes a secondary interlocking system, preventing axle retraction during towing.

# SPECIFICATIONS

## with attention to detail

	3522A	4527A	5533A	3632T
Working Height <sup>1</sup>	43 ft 2 in (13.3 m)	51 ft (15.7 m)	61 ft 3 in (18.8 m)	43 ft 6 in (13.4 m)
Maximum Platform Height <sup>2</sup>	37 ft 2 in (11.3 m)	45 ft (13.7 m)	55 ft 3 in (16.8 m)	37 ft 6 in (11.4 m)
Horizontal Outreach <sup>3</sup>				
Maximum from Centerline	22 ft 6 in (6.9 m)	27 ft (8.2 m)	33 ft 5 in (10.2 m)	32 ft (9.8 m)
Maximum from Outrigger Edge	17 ft 5 in (5.3 m)	21 ft (6.4 m)	27 ft 4 in (8.2 m)	27 ft (8.2 m)
Up and Over Height	19 ft (5.8 m)	20 ft 9 in (6.3 m)	23 ft 1 in (7 m)	N/A
Turntable Rotation	700° non-continuous	700° non-continuous	700° non-continuous	360° continuous <sup>4</sup>
Load Capacity <sup>5</sup>	500 lbs (227 kg)	500 lbs (227 kg)	500 lbs (227 kg)	500 lbs (227 kg)
Leveling Capability	12 1/2°	13 1/2°	12 1/2°	12°
Stowed Dimensions				
Height	76 3/4 in (195 cm)	76 3/4 in (195 cm)	78 in (198 cm)	76 3/4 in (195 cm)
Length	16 ft 3 in (4.95 m)	19 ft 6 in (5.9 m)	22 ft 11 in (7 m)	21 ft 11 in (6.7 m)
Width	5 ft 5 1/2 in (166 cm)	5 ft 5 1/2 in (166 cm)	5 ft 6 1/4 in (168 cm)	5 ft 5 in (165 cm)
Platform Dimensions				
Height	43 in (109 cm)	43 in (109 cm)	43 in (109 cm)	43 in (109 cm)
Length	30 in (76 cm)	30 in (76 cm)	30 in (76 cm)	30 in (76 cm)
Width	48 in (122 cm)	48 in (122 cm)	48 in (122 cm)	48 in (122 cm)
Platform Rotation / Type <sup>6</sup>	90° / Manual	90° / Manual	90° / Manual	90° / Manual
Jib				
Length	4 ft 3 in (1.3 m)	4 ft 3 in (1.3 m)	4 ft 3 in (1.3 m)	N/A
Vertical motion	150° (+70 / -80)	150° (+70 / -80)	150° (+70 / -80)	N/A
Horizontal Rotate / Type <sup>6</sup>	180° / Hydraulic	180° / Hydraulic	180° / Hydraulic	N/A
Outrigger Footprint				
Length	11 ft 3/4 in (3.4 m)	12 ft 4 in (3.8 m)	12 ft 11 in (3.9 m)	12 ft 2 in (3.7 m)
Width	9 ft 10 1/2 in (3 m)	11 ft 4 in (3.5 m)	12 ft 9 in (3.9 m)	11 ft 3 1/2 in (3.4 m)
Footpad Diameter	10 in (25.4 cm)	12 1/2 in (32 cm)	12 1/2 in (32 cm)	12 1/2 in (32 cm)
Tongue Weight <sup>7</sup>	190 lbs (86 kg)	170 lbs (77 kg)	270 lbs (122 kg)	160 lbs (73 kg)
Parking Brake	Standard	Standard	Standard	Standard
Tow Speed Rating	65 mph (105 km/h)	65 mph (105 km/h)	65 mph (105 km/h)	65 mph (105 km/h)
Tire Size	ST 205/75 R14C	ST 225/75 R15D	ST 225/75 R15D	ST 225/75 R15D
Control System	24V DC	24V DC	24V DC	24V DC
Batteries	4 x 6V 245 amp-hr	4 x 6V 245 amp-hr	4 x 6V 245 amp-hr	4 x 6V 245 amp-hr
Total Weight <sup>7</sup>	3,150 lbs (1,429 kg)	3,880 lbs (1,760 kg)	4,400 lbs (1,996 kg)	4,200 lbs (1,905 kg)

1 The metric equivalent of working height adds 2 m to the maximum platform height. U.S. adds 6 ft to the maximum platform height.

2 Maximum platform height when outriggers are fully extended on a level surface.

3 As is standard industry practice, this is measured from the edge of the platform plus 20 in (.5 m) arm reach.

4 700-degree non-continuous rotation when equipped with the Drive & Set option.

5 Capacity may vary depending on options equipped on machine. Consult factory for details.

6 These are offered as optional equipment.

7 Weights will vary depending on options and/or market destination. Consult factory for details.

## standard FEATURES



Steel Outrigger Cylinder Guards

Non-Marking Outrigger Footpads

Polymer Pads

Dual Battery Condition Indicators

Dual Swing Out Battery Trays

Dual 110v Outlets

Dual Foam Filled Jockey Wheels

Forklift Pockets

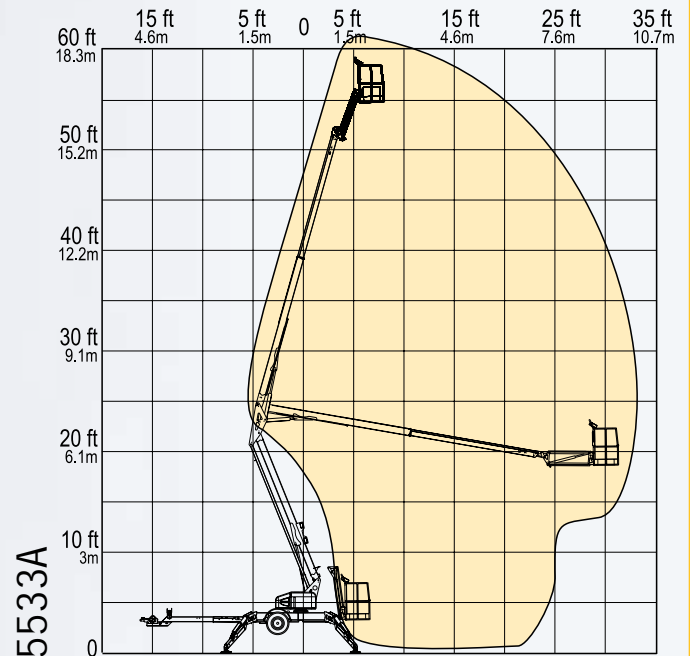
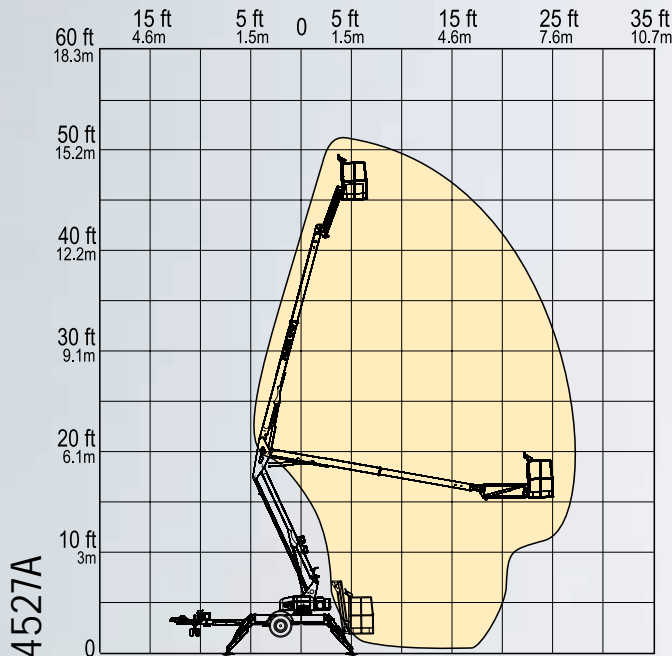
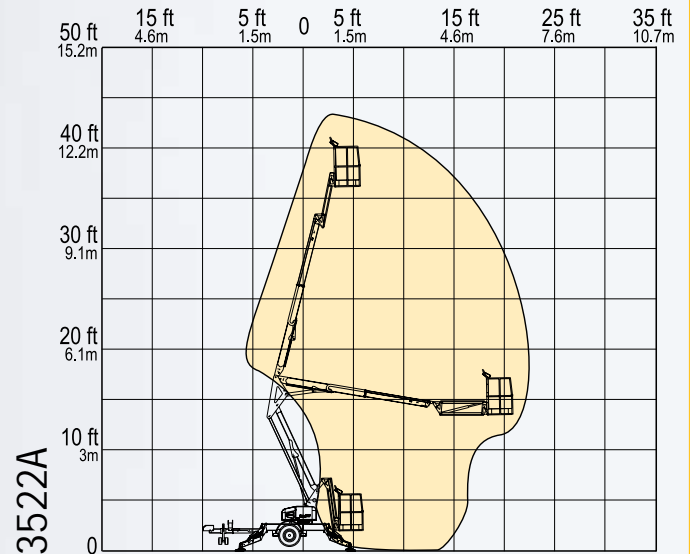
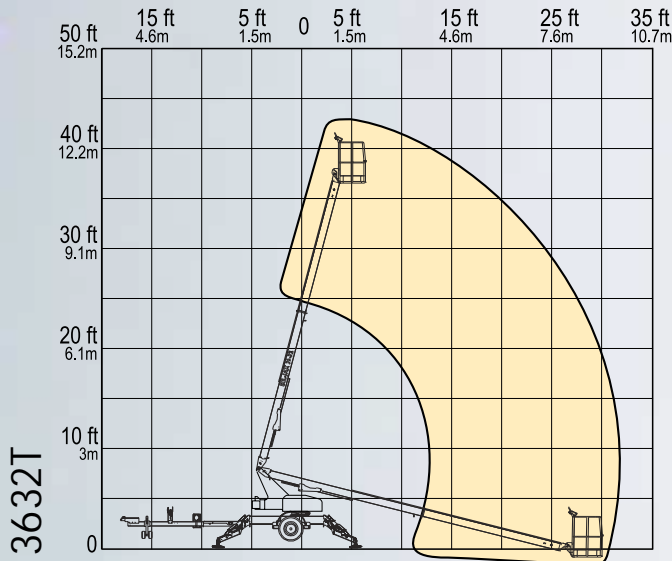
## standard **FEATURES**

- 500 lb (227 kg) lift capacity
- Extension boom and platform jib (articulating)
- Outrigger interlocks and tilt alarm/sensor
- Automatic leveling hydraulic outriggers
- Multiple control function speeds
- Self-leveling platform
- Upper and lower 110/60 GFI outlet
- Surge and parking brakes
- Dual hour meter
- Dual battery condition indicators
- Non-marking footpads
- Heavy-duty 2-inch ball hitch
- Integrated forklift pockets

## available **OPTIONS**

- Material lifting system
- DC/Gas hybrid power
- Drive and set option
- Platform rotation
- Jib rotation (articulating)
- Air line to platform
- Water line to platform
- Spare tire with mounting kit
- Tool tray
- Adjustable height combination hitch
- Various combination hitch couplers
- Custom colors

## **RANGE OF MOTION** with superior working envelopes



# APPLICATIONS & ideal uses



- Residential Construction
- Tree Trimming
- Pressure Washing
- Painting
- Remodeling
- Eaves Maintenance
- Decorating
- Roof Maintenance
- Cleaning
- Lighting Maintenance
- Satellite Installation
- Security Companies
- Landscapers
- Construction
- Municipalities
- Roofing
- Golf Courses
- Schools and Universities
- Museums
- Agriculture
- Park Services
- Restaurants
- Shopping Complex
- Churches
- Truss Placement
- HVAC Installation
- Sign Companies
- Pole Buildings



## additional BIL-JAX PRODUCTS

Frame and System Scaffolds, Utility Scaffold, Masonry Scaffold, Drywall Lifts and Carts, Telescopic Lifts, Equipment Trailers, Material Lifts, Log Splitters, Event Staging and Seating, Loading Ramps, Trash Removal Systems, Aluminum Planks and Stages

The picture to the left, depicting residential Christmas light decorating, illustrates the light strands plugged into the available GFI protected outlet located by the platform. Do not use this equipment in areas where the equipment or user may come in contact with separately powered decorative lighting or other live power sources.

The best investment you'll ever make...

# BIL-JAX<sup>®</sup>

125 Taylor Parkway  
Archbold, OH 43502-9309  
800-537-0540, Fax 419-445-0367  
www.biljax.com

Printed in the USA

© Bil-Jax, Inc. 2006

Part No. 0205-0057\_rev2

BIL-JAX, Inc. provides coverage on all products for one (1) full year, and covers all specified major structural components for five (5) full years. Due to continuous product improvements, we reserve the right to make specification and/or equipment changes without prior notification or obligation. Photographs and drawings contained herein are for illustrative purposes only. Refer to the appropriate Operator's Manual for instructions on the proper use of this equipment. Failure to follow the appropriate Operator's Manual instruction or to otherwise act irresponsibly, may result in serious injury or death. This machine meets or exceeds applicable OSHA Regulations, and complies with all ANSI standards as originally manufactured for intended applications. Market specific machine configurations meet or exceed applicable CSA standards.

