

Tranz **Sporter**



Owners Manual

LH200

(Lift Hoist 200)

Platform Hoist

Updated: 5/29/08

Instructions #08100

TIE DOWN ENGINEERING • 255 Villanova Drive SW • Atlanta, GA 30336
www.tiedown.com (404) 344-0000 Fax (404) 349-0401



052908, E904

Congratulations on your Purchase of the TranzSporter Platform Hoist.

The TranzSporter LH - Series was designed to last.

Features include...

- Unitized Design - Fewer parts, stronger, less maintenance
- Non-Slip Carriage Deck - Safer operation
- Heavy Duty Aluminum Frame - Absorbs more punishment
- Spring Loaded Safety Latch - Keeps deck in place when transporting or when operator is away from the hoist.
- Dual Brake System - Better control, longer brake life
- Hi-Impact Nylon Belt Guard - Safer operation
- Oven baked, Black Powder Coat Finish - Durable, long lasting
- Wide Foot Plate - Better control of lift operation
- Permanent Safety Information - Combination of stamped-in safety information and decal's remind your operator to use hoist in a safe manner
- Large Aluminum Foot Pads - Adds more stability, lasts longer
- Extended Brake Handle - Keeps operator away from hoist when raising or lowering materials

User Responsibilities

PERFORM THE FOLLOWING AT THE START AND END OF THE WORK DAY AND AFTER 4 HOURS OF OPERATION DURING THE DAY:

- Check oil level in engine and fill according to manufacturer's specifications.
- Check cable for smooth operation and for signs of wear.
- Check for loose bolts and tighten according to specifications.
- Check track sections and all other moving parts for excessive wear or fatigue.
- Check general condition of equipment.
- Check operator's understanding of the proper operation for this equipment.
- Check extension cords and connections for wear or damage.
- Check brake parts regularly for wear or damage.

WARNING: DO NOT OPERATE THIS EQUIPMENT IF ANY UNSAFE CONDITIONS EXIST OR OCCUR DURING OPERATION.

Remember: Safety First!!

REPAIR INFORMATION

Your LH-Series platform hoist is designed to provide years of service, however, when your LH-Series hoist requires parts, service or repairs, please contact your nearest authorized dealer, or call 1-800-241-1806, ext. 329 for information on where to take your platform hoist.

WARNING:

- **KEEP TRACK SECTION CLEAR OF ALL ELECTRICAL WIRES AND EQUIPMENT**
- **BE AWARE OF OVERHEAD OBJECTS**
- **NEVER USE HOIST AS A LADDER**
- **NEVER OPERATE HOIST WITH A HUMAN ON PLATFORM**
- **NEVER STAND UNDER PLATFORM WHEN LOWERING**
- **NEVER USE INDOORS OR IN AN AREA WITH POOR VENTILATION**

PLEASE READ!

The equipment described herein has been engineered to perform specific lifting tasks, with a minimum of risk to the operator. The instructions for operation and safety contained herein were designed to help insure that this equipment, performs its function, as stated without adding to the endangerment of persons, equipment, and/or materials.

LH-200 - Series Specifications:

200 lb. MAXIMUM Hoisting Capacity

LH - Series- gasoline power unit - (4 hp. Briggs & Stratton, 4 hp. Honda or High Torque Electric Motor)
Self-energizing brake, 3 ft. steel base section, 4, 8, and 16 ft. track sections

TranzSporter

Limited Warranty for all models

Replaces all dated or undated limited warranties dated before May 1, 2001

Tie Down Engineering, Inc. will repair or replace, free of charge, any part, or parts of the TranzSporter lift hoist that are defective in material or workmanship or both. The limited warranty is in effect for 90 days from date of purchase. Return the defective unit to the dealer or contact Tie Down direct at 800-241-1806, x329.

THERE IS NO OTHER EXPRESS WARRANTY IMPLIED WARRANTIES INCLUDING THOSE OF MERCHANTABILITY AND FITNESS FOR A PARTICULAR PURPOSE ARE LIMITED TO ONE YEAR FROM PURCHASE OR TO THE EXTENT PERMITTED BY LAW AND ALL IMPLIED WARRANTIES ARE EXCLUDED TO THE EXTENT EXCLUSION IS PERMITTED BY LAW. Some countries or states do not allow limitation on how long an implied warranty lasts and some countries or states do not allow the exclusion or limitation of incidental or consequential damages so the above limitation and exclusion may not apply to you. This warranty gives you specific legal rights and you may also have other rights which vary from country to country and state to state.

TIE DOWN ENGINEERING • 255 Villanova Drive SW • Atlanta, GA 30336
www.tiedown.com (404) 344-0000 Fax (404) 349-0401



Safety instructions

CAUTION: Please read the safety warnings and Instructions contained in this manual before operating the LH-Series hoist. Failure to obey the warnings contained herein could result in personal injury or damage to the equipment; however, this information should not be a substitute for routine accident prevention, but rather an addition to routine accident prevention.

GENERAL SAFETY INSTRUCTIONS:

1. Transport and handle your LH-Series hoist with care.
2. Unpack the TranzSporter carefully and inspect for any damage that may occur during transportation.
DO NOT USE THE HOIST IF ANY PART IS DAMAGED
3. Please observe all safety and warning labels attached to the hoist.
4. Use only replacement parts furnished by the manufacturer.
5. Always keep the area around the base section of the TranzSporter hoist clear to help prevent slipping, tripping or falling against the hoist.
6. **DO NOT ALLOW ANYONE TO OPERATE THE TRANZSPORTER HOIST WHO HAS NOT BEEN THOROUGHLY AND PROPERLY TRAINED IN THE CORRECT OPERATION AND USE OF THIS HOIST.**
7. This hoist is manufactured to lift materials only. Do not use the LH-Series hoist for the purpose of transporting personnel from one level to another.
8. Do not climb the LH-Series hoist or use as a personnel ladder.
9. Do not overload - maximum lifting capacity for the LH-200 is 200 lbs. with a load capacity of 180 lbs.
10. Keep hands, feet and other body parts as well as clothing away from the track sections and moving or rotating parts of the LH-Series hoist when starting the engine or when operating the hoist.
11. Do not allow any persons to walk or work under or near the LH-Series hoist while in operation.
12. Do not use this hoist to transport hot asphalt or any other hot molten substance from one elevation to another.
13. Store all parts of the LH-Series hoist in such a fashion as not to damage any of the components.
14. Do not operate indoors or in an area with poor ventilation.

Remember: Safety First!!

Warning labels are attached to the LH200 and are weather resistant. If you notice any of these decal's missing from your hoist, please contact **TIE DOWN ENGINEERING** for a replacement label.

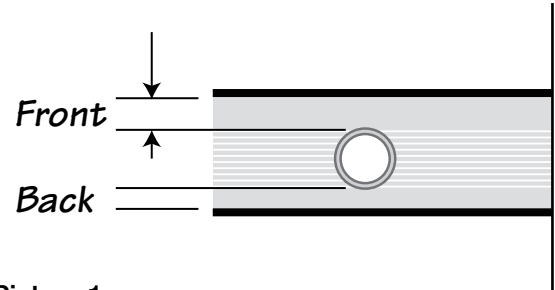


Assembly Instructions LH200 Hoist

Congratulations on purchasing the TranzSporter LH200 Hoist. The two boxes contain the five assembled parts plus the owner's manual, making up the LH200. Please read the following instructions completely before starting assembly. Refer to the owner's manual for further information on use and maintenance of the LH200.

Parts found in the two boxes are:

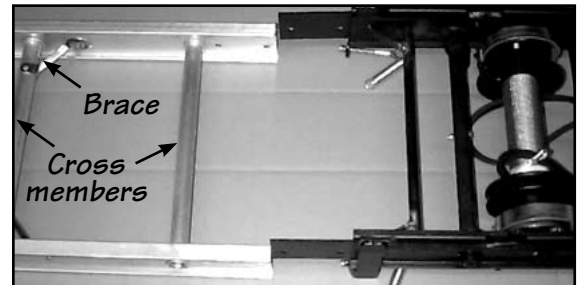
- Track section base
- Carriage assembly
- End cap
- Motor base
- Brake handle
- Owner's manual



Picture 1

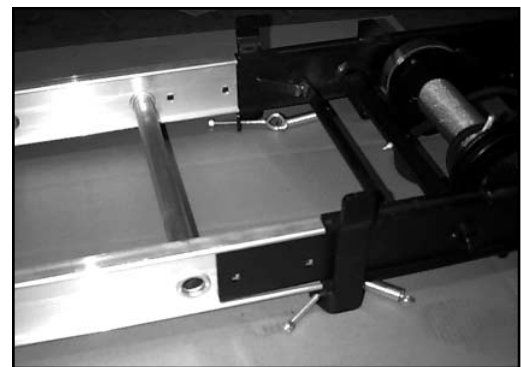
1. Remove all hoist parts from the two boxes and place on a clean floor or assembly area. Lay one track section on a flat floor with the "front" side up. This is determined by the space between the track cross bar and the track section edge as shown in picture 1.

2. Remove slice plates from the track section. Attach the track section base to the bottom of the track section using four 3/8" x 3/4" hex head bolts provided or the bolts used in attaching the splice plates. Note: The track base mounts to the outside of the track section as shown in picture 3. The bottom of the track section is determined by making sure the braces are below the cross bars as shown in picture 2.

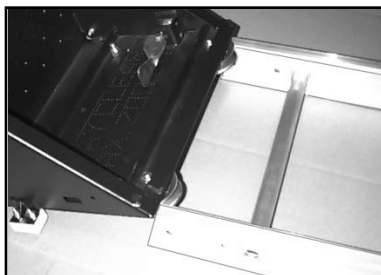


Picture 2

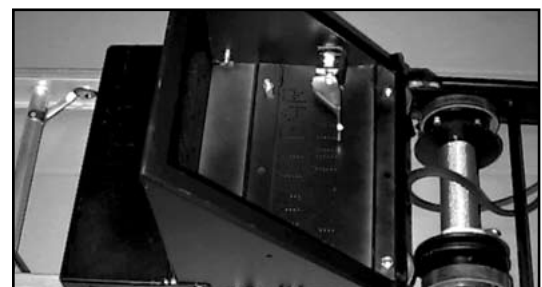
3. Starting at the top of the track section slide carriage assembly onto track section so that the four rollers connect to the top rail of the track section as shown in picture 4. "Roll" carriage assembly to the base. At this time lock the base in place using the safety latch as shown in picture 5.



Picture 3



Picture 4

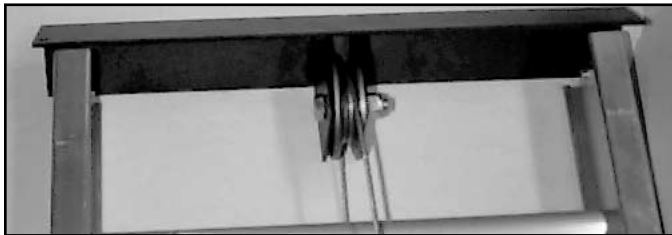


Picture 5

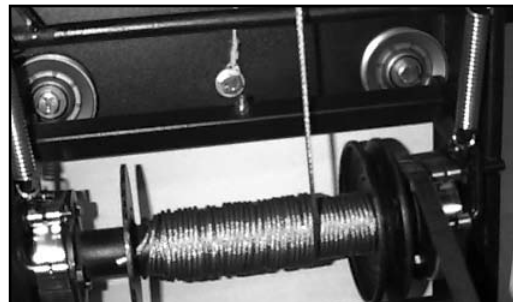
4. The end cap is bolted to the top end of the last section of track section you intend to use. Assemble as shown right using two 3/8" x 3/4" hex head bolts with lock nuts provided.



5. Attach splice plates to the bottom section of the Green Bull track. **Splice plates are mounted on the outside track section.** Slide the top section track into the grooves on the inside track section, attach with 2 nuts and bolts per side. Shown left.

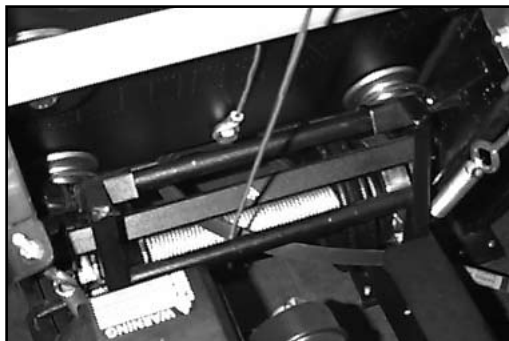


Picture 6



Picture 7

6. From the back side of the hoist, remove the end of the cable from the drum. It helps to attach the brake handle, pulling back releases the brake drum. The cable will then easily unspool. Staying on the outside of the base section and track section, take the cable to the top of the last track section where the cap and pulley are attached. Feed the cable end through the pulley as shown in picture 6, and down the front side of the track section to the back of the carriage assembly. Attach the end of the cable to the carriage assembly as shown in picture 7.



Picture 8



Picture 9

7. After the track section with base is properly secured to the work site and properly braced, the motor assembly can be attached to the base unit. The foot pad slides under the base section, while "hanging" the motor base as shown in picture 8.



8. The handle is attached to the brake release bar, aligning the holes for the insertion of the pin provided.



9. If needed, attach the two plywood/rolled goods brackets with the nuts and bolts provided (Shown left).



10. Before operating, please review Safety Operating Instructions located under the platform base.

GASOLINE POWER UNIT

1. Handle fuel with care. It is **EXTREMELY** flammable and explosive under certain conditions.
2. Do not smoke, allow open flames or sparks to be present during the refueling operation.
3. Use only an approved fuel container to transport fuel.
4. Do not fuel while engine is hot - allow to cool before attempting the refueling operation.
5. Replace all fuel tank caps securely and wipe the spilled fuel before restarting engine.
6. Do not operate the LH-Series gasoline hoist in an enclosed area. The exhaust can be especially hazardous in an enclosed area.
7. Stop the engine and lower the platform when leaving the vicinity of the LH-Series hoist.
8. Always stop the engine, lower the platform, wait for all moving parts to stop, and allow the engine to cool before disassembling or moving the hoist.
9. Disconnect the spark plug wire from the plug before disassembling or moving the hoist.
10. **DO NOT** store the engine in an enclosed area.
11. Allow engine to cool before storing.
12. **DO NOT** store engine where it might be subjected to flames, sparks, extreme heat or any other source of combustion.

Raising the Track Section Assembly

WARNING: KEEP TRACK SECTIONS CLEAR OF ALL ELECTRICAL WIRES AND EQUIPMENT BE AWARE OF OVERHEAD OBJECTS-NEVER CLIMB HOIST!

The hoist assembly is extremely top heavy and must be kept under control at all times.

Two alternate methods are suggested for raising the platform hoist to the operating position.

PROCEDURE "A"

This procedure requires two or preferably three men.

1. Lay the assembled track sections with the platform attached parallel to the building wall that is to support the hoist.
2. Tie a rope to the head bracket and have the man on roof pull up the hoist while the other man on the ground braces the shoes on the bottom section to prevent slippage of the hoist shoes. The third man on the ground may aid in erecting by "walking" the hoist up hand over hand by the rungs.
3. When the hoist reaches a vertical position, carefully turn the hoist 90 degrees with the platform pointing away from the building. Move the bottom of the hoist away from the building, 1/4 of the height of the building where the top of the hoist is to be supported. Make allowances for overhang. See track section support chart for approximate distances of the base from the bottom track.

ALTERNATE PROCEDURE "B"

1. Place track section assembly perpendicular to the building with the bottom shoes of the steel bottom section resting against the building to prevent slipping.
2. Tie a rope to the head bracket and have the man on the roof pull up the hoist while the other man on the ground braces the shoes on the steel bottom section to prevent slippage of the hoist shoes. The third man on the ground may aid in erecting by "walking" the hoist up hand over hand by the rungs.
3. When the hoist reaches a vertical position, carefully turn the hoist 180 degrees with the platform pointing away from the building. Move the bottom of the hoist away from the building, 1/4 of the height of the building where the top of the hoist is to be supported. Angle of track sections from building should be between 18 and 20 degrees. Make allowances for an overhang. See track section chart for approximate distances of the base from the building.

AFTER ERECTING THE HOIST USING PROCEDURE "A" OR "B", CONTINUE AS FOLLOWS:

4. Tie the track section to the roof with a rope fastened to a cross tie on the top bracket to prevent slippage of the track section. **DO NOT TIE ROPE TO THE RAILS - THIS WILL PREVENT THE PLATFORM FROM OPERATING PROPERLY.**
5. Mount the power unit to the top rung of the steel bottom section. Attach the V-belt to the pulley on the power unit. Slide the brake handle over the brake arm and install the pin provided.
6. Remove any ropes used to secure the platform during transportation.
7. Make certain the shoes on the steel bottom section are firmly resting on level ground. This will help to prevent track section slippage or uneven loading of the track section which could cause damage or injury to personnel and/or to equipment.

WARNING: BEFORE LOWERING THE TRACK SECTIONS, CAREFULLY CHECK FOR OVERHEAD OBJECTS AND POWER LINES.

Raising the platform with or without load

WARNING: THE OPERATOR OF THIS HOIST UNIT SHOULD WEAR APPROPRIATE SAFETY EQUIPMENT WHICH SHOULD INCLUDE APPROVED HAND PROTECTION, HEAD PROTECTION AND EYE PROTECTION.

To raise the platform on LH-200, face the platform and stand as far as possible from the hoist to operate. Place your foot on the foot control brace to engage the motor to drum belt, permitting the platform to roll up the track section. When the platform reaches the top, release foot IMMEDIATELY. This will apply the self energizing brake. Move away from the hoist while the load is being removed from the platform.

Lowering the platform

To lower the carriage, stand to the right or left side of the hoist and grasp the brake handle. Lightly feather the platform down by engaging and disengaging the brake to slow the carriage. Lower the carriage to the ground at a slow speed (not to exceed 50/feet per minute). Continue to decelerate the platform as it nears the ground to prevent damage to the platform or bottom brace stops.

CAUTION: NEVER APPLY THE BRAKE ABRUPTLY - BROKEN HOIST CABLES AND/OR SEVERE INJURY TO PERSONNEL OR EQUIPMENT MAY OCCUR. MAKE CERTAIN PLATFORM DOES NOT STRIKE THE BOTTOM BRACE STOPS UPON REACHING THE BOTTOM OF THE TRACK SECTION.

Lower and dismantle the platform hoist assembly in the reverse of the erection procedure, observing all safety procedures.

Track Section Chart - Brace Support

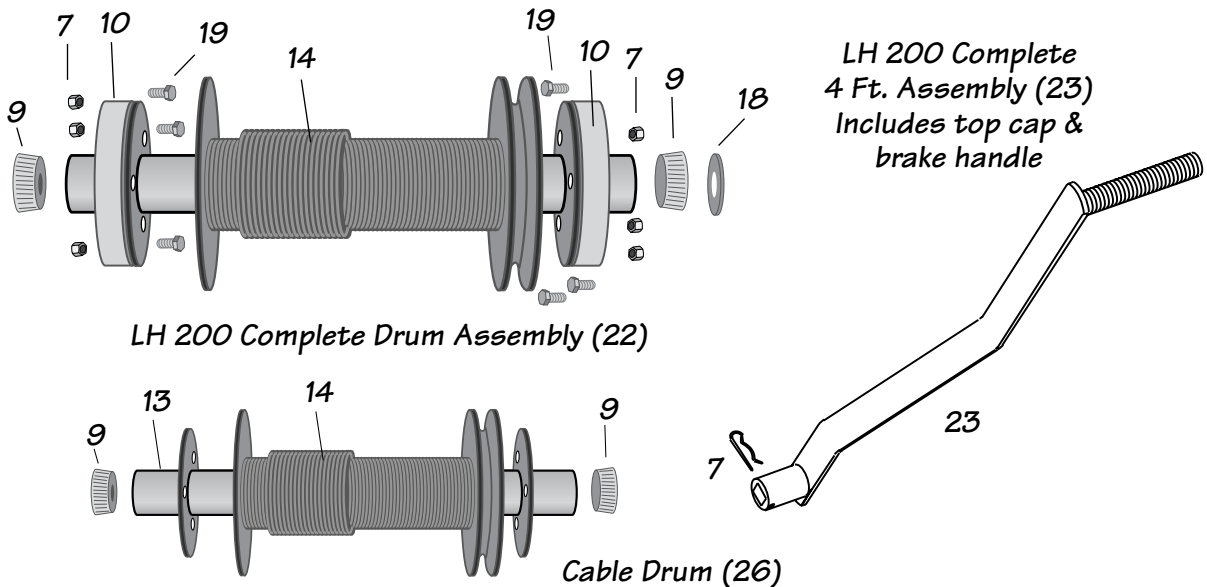
Track lengths in excess of 28 feet require the use of the telescoping brace (#60005). The table below provides the suggested information for the distance of the bottom track from the building and the location of the track support for various conditions.

Building Height	Length of Track	Base of Track to Building	Track Brace Location Cross Tie from Bottom
42	44(max)	10'6"	25th and 27th
40	44	10'0"	26th and 25th
36	40	9'0"	19th and 21st
32	36	8'0"	14th and 16th
28	32	7'6"	11th and 13th
24	28	6'6"	Not Required
20	24	6'6"	Not Required
16	20	5'0"	Not Required
12	16	4'6"	Not Required

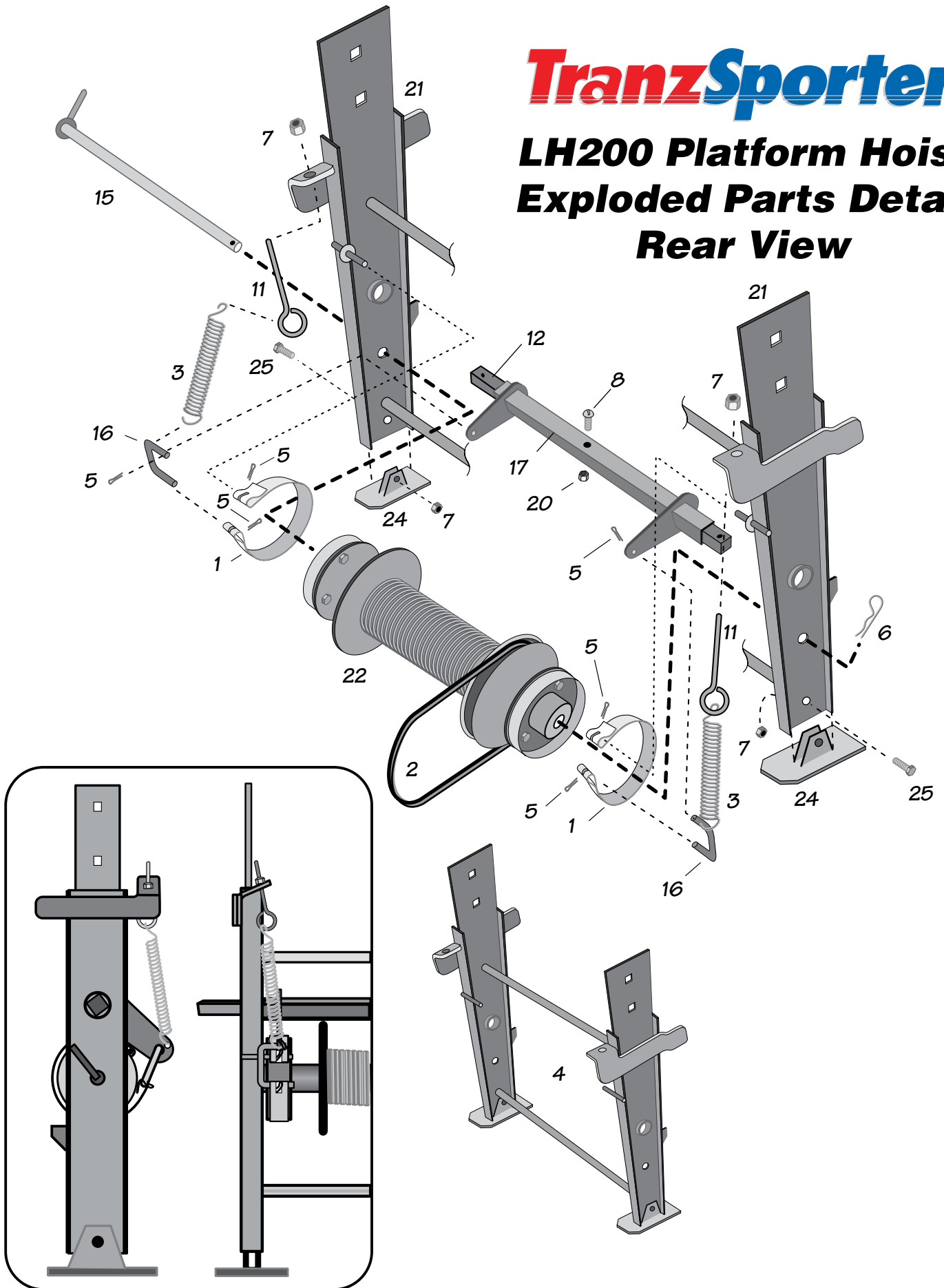
TranzSporter LH-200 Parts Detail List

Number	Part No.	Description	Quantity Needed
1	10033	Strap Brake	2
2	10034	Belt B 50in.	1
3	10049	Spring Extension	2
4	48503	Track Section Platform 3 ft. w/Safety Shoes	1
5	10603	Cotter Pin 3/32"x1/2"	6
6	10604	Cotter Pin Hair 111-20	2
7	10650	Nyloc Hex Nut 5/16"-18	10
8	10946	Bolt HHCS 1/4-20	1
9	11080	Bearing 1.375 x 5/8" x 1/2"	2
10	13000	Drum Brake 4"	2
11	13211	Eye Bolt 5/16" x 3" zinc	2
12	48505	Brake Control Shaft	1
13	48460	Cable Drum, includes cable (14) and Bearings (9)	1
14	50383	Cable 5/32" x 100'	1
15	48509	Cable Drum Shaft	1
16	48510	Brake Linkage	2
17	48515	Brake Control Weldment	1
18	48517	Cable Drum Shim	1
19	10518	Bolt 5/16" x 3/4" Grade 5	6
20	10027	Nut 1/4" zinc	1
21	48490	Complete 3' Track Base with all hardware	1
22	48508A	Complete Drum Assembly, except drum shim (18)	1
23	48506A	Brake Handle with Rubber Grip	1
24	48511A	Complete Safety Shoe (pair)	2
25	10953	Bolt 5/16" x 1-1/4" HHCS	2
26	48460	Cable Drum, Cable(14) & Bearings (9)	1

042007,E603



LH200 Platform Hoist Exploded Parts Detail Rear View





LH200

Platform Parts Detail

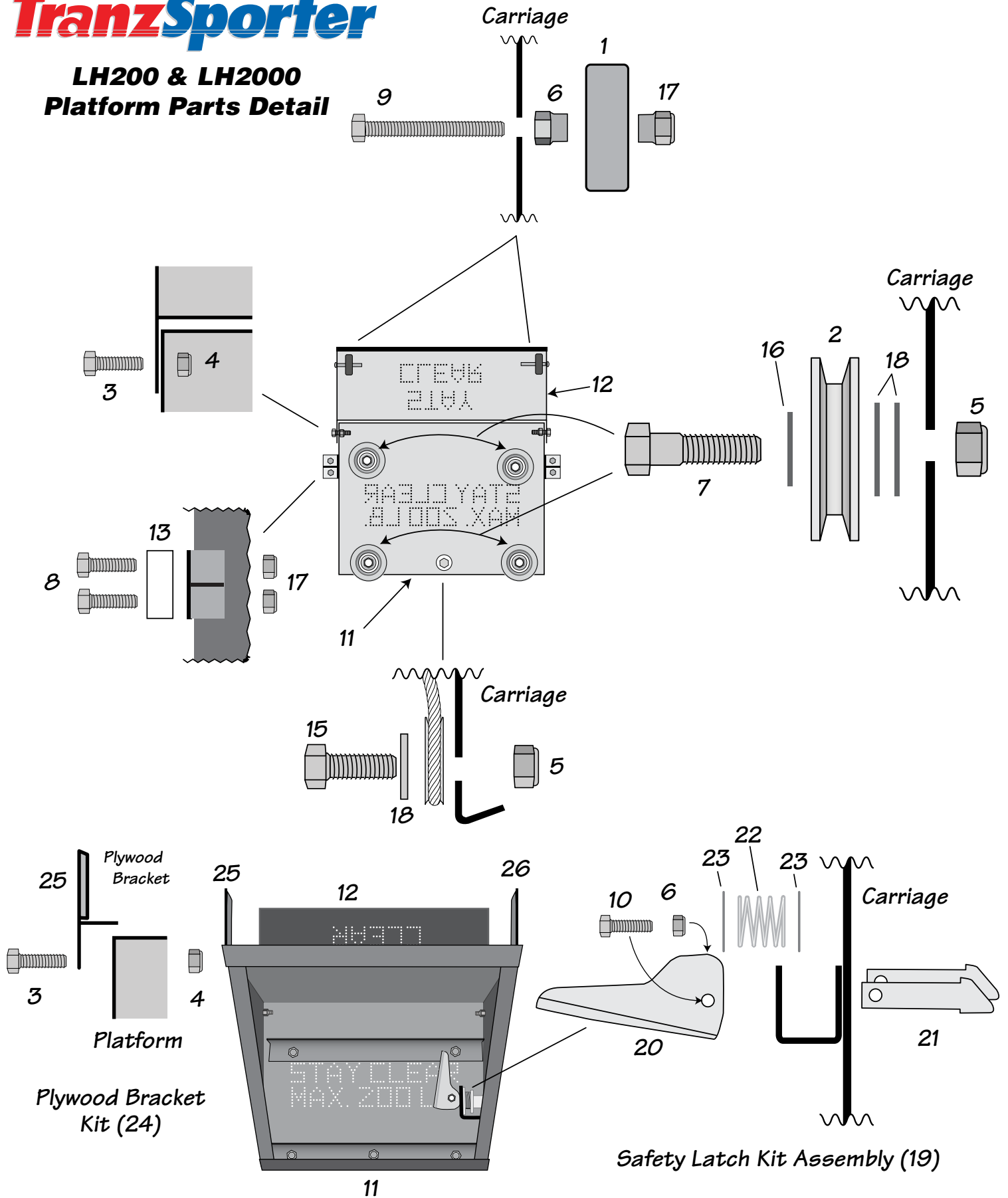
<i>Number</i>	<i>Part No.</i>	<i>Description</i>	<i>Quantity Needed</i>
1	10032	Skate Wheels	2
2	13132	Idler Sheave 3-1/4"x 1/2"	4
3	10538	Cap Screw Hex 3/8"x1"	6
4	10627	Nyloc Nut 3/8"	6
5	10645	Nyloc Hex Nut 1/2"	5
6	10650	Nyloc Hex Nut 5/16"-18	3
7	10931	Bolt 1/2"x 2" Grade 5 Zinc	2
8	10946	Bolt 1/4"-20 x 1-1/2" Zinc	4
9	10948	Bolt 1/4"x 2" Grade 2 Zinc	2
10	10952	Bolt 5/16"x 1" Zinc	1
11	48501	200 lb. Carriage	1
12	48504	Carriage Flap	1
13	48513	Plastic Guide Block	2
14	48516	Reinforcing Sheave Ring	2
15	10806	Hex Head Bolt 1/2"x1/2" G5	1
16	10517	Washer	4
17	10027	Nut 1/4"-20 Zinc	6
18	10573	Flat Washer 1/2"	11
19	17020	Safety Latch Kit	1
20	17020-1	Latch Handle	1
21	17020-2	Plunger Safety Latch	2
22	17020-3	Latch Spring	1
23	17020-5	Latch Wear Plate	2
24	48944	Complete Plywood Kit	1
25	48944L	Left Plywood Bracket	1
26	48944R	Right Plywood Bracket	1
	48480	Complete Carriage Assembly	1

052908,E 600

TranzSporter® • Manufactured in the U.S.A. © 2006 TIE DOWN ENGINEERING, INC

TranzSporter

LH200 & LH2000 Platform Parts Detail



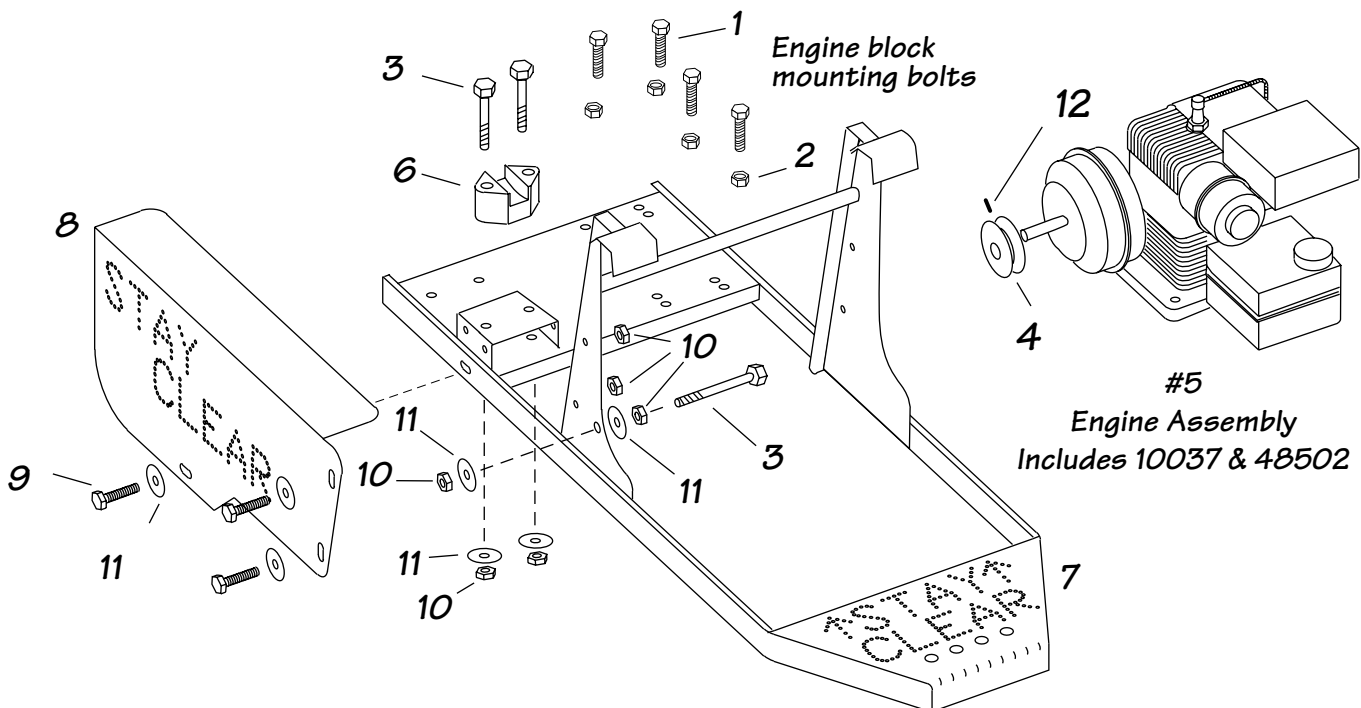
Briggs & Stratton Motor Mount Assembly Detail



Briggs & Stratton Engine (5)

Number	Part No.	Description	Quantity Needed
1	10954	Bolt 5/16"x1-1/2" Zinc	4
2	10650	Nyloc Hex Nut 5/16"-18	4
3	10026	Bolt 1/4"-20 x 3" Grade 2	3
4	10037	Sheave for drive motor	1
5	12559A	Briggs & Stratton Motor Assembly 4.0 HP	1
6	45005	Block Pivot Saddle	1
7	48500	Motor Mount Weldment	1
8	48514	Belt Guard	1
9	BBB2500075	Bolt 1/4" x 3/4" Grade 2	3
10	10027	Nut 1/4"-20 Zinc	7
11	10507	Flat Washer 1/4"	7
12	48502	Key 3/16"x3/4	1
	48470	Complete Kit, includes Briggs Engine, Weldment & all hardware	1
	48500AA	Complete base kit (without motor), includes weldment & all hardware, without motor	1

110703,602



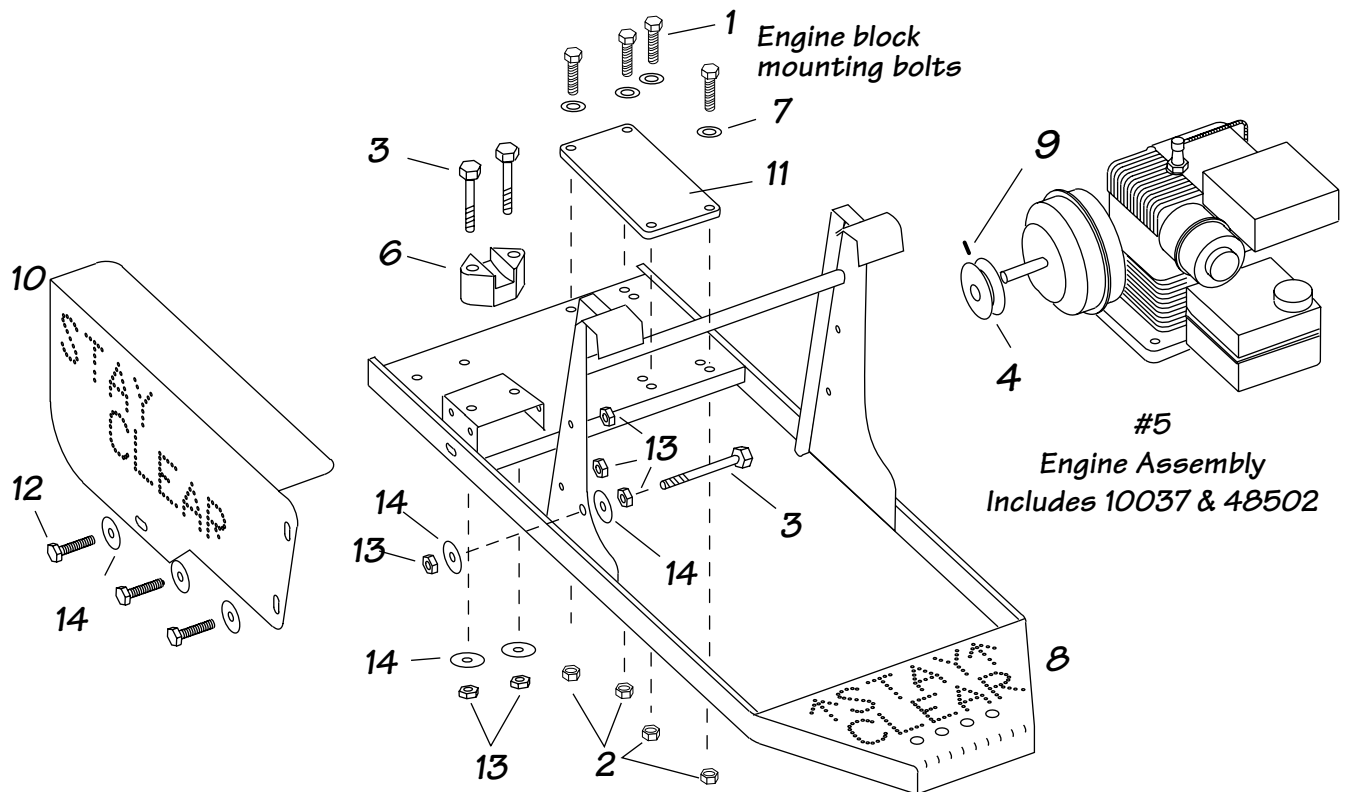
Honda Motor Mount Assembly Detail

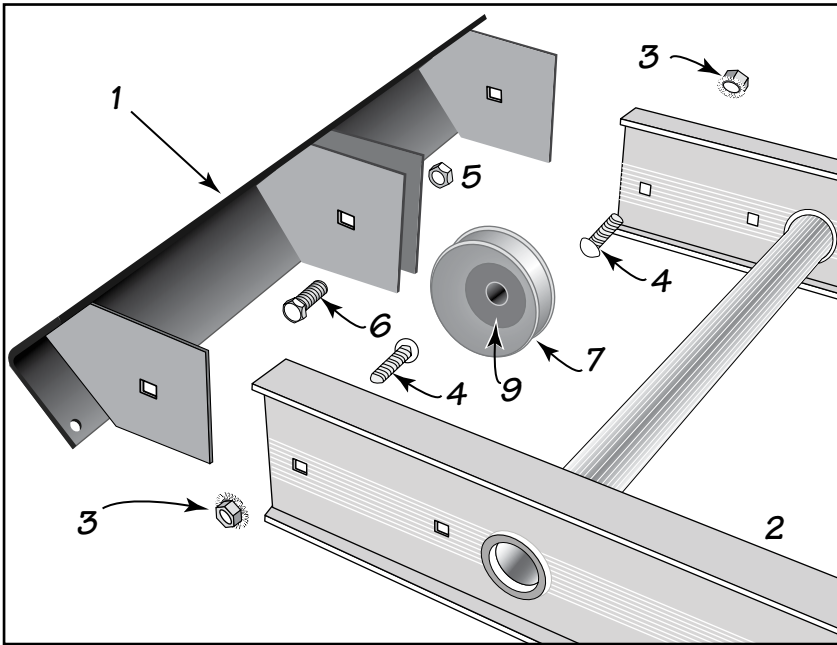


Honda Engine (5)

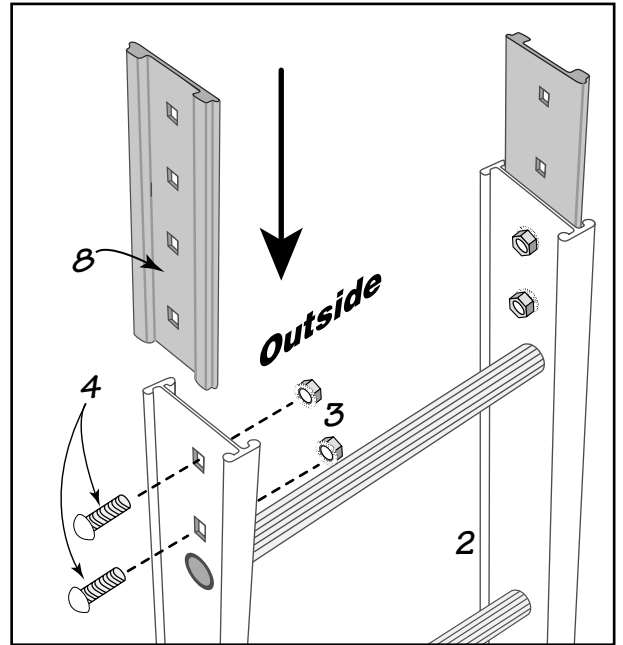
Number	Part No.	Description	Quantity Needed
1	10955	Bolt 5/16"x1-3/4" Zinc	4
2	10650	Nyloc Hex Nut 5/16"-18	4
3	10026	Bolt 1/4"-20 x 3" Grade 2	3
4	10037	Sheave for drive motor	1
	10039A	Sheave (4) and Key (9) Assembly	1
5	10039	Honda Motor Assembly 4.0 HP	1
6	45005	Block Pivot Saddle	1
7	10509	Flat Washer	4
8	48500	Motor Mount Weldment	1
9	48502	Key 3/16"x3/4	1
10	48514	Belt Guard	1
11	48518	Honda Mounting Shim	1
12	BBB2500075	Bolt 1/4" x 3/4" Grade 2	3
13	10027	Nut 1/4"-20 Zinc	7
14	10507	Flat Washer 1/4"	7
	60001	Complete Kit includes Honda Engine, Weldment & all hardware	1

062107,E602





Top Cap Assembly



*Splice Plate Assembly
(Placed on the outside of each side)*

Number	Part No.	Description	Quantity Needed
1	48507A	Top Track Section Cap Complete	1
	48507	Top Track Section Cap without pulley	1
2	10091	Platform 8 Feet 200#	1
3	10622	Nuts Keps 3/8"	6
4	10914	Bolt Carriage 3/8" x 3/4"	6
5	10645	Nut Nyloc Hex 1/2"	1
6	10931	Bolt HHCS 1/2"x2"	1
7	13132	Sheave Idler 3-1/4" x 1/2"	1
8	10093	Splice Plate w/hardware Kit (2 plates)	1
9	12107	Washer Flat 1/2"	2
10	48507A	Complete Top Track Section Kit	1

051809.E601

TranzSporter® • Manufactured in the U.S.A. © 2009 TIE DOWN ENGINEERING